

Gelsolin Monoclonal Antibody (20)

Product Details	
Size	400 µL
Species Reactivity	Human
Host/Isotype	Mouse / IgG1, kappa
Class	Monoclonal
Type	Antibody
Clone	20
Conjugate	Unconjugated
Immunogen	Gelsolin purified from human plasma.
Form	Liquid
Concentration	1.03 mg/mL
Purification	Protein A/G
Storage buffer	PBS, pH 7.4
Contains	15mM sodium azide
Storage conditions	4° C, store in dark
RRID	AB_667468

Applications	Tested Dilution	Publications
Western Blot (WB)	Assay-dependent	-
Immunohistochemistry (Paraffin) (IHC (P))	Assay-dependent	-
Immunocytochemistry (ICC/IF)	Assay-dependent	-
ELISA (ELISA)	Assay-dependent	-

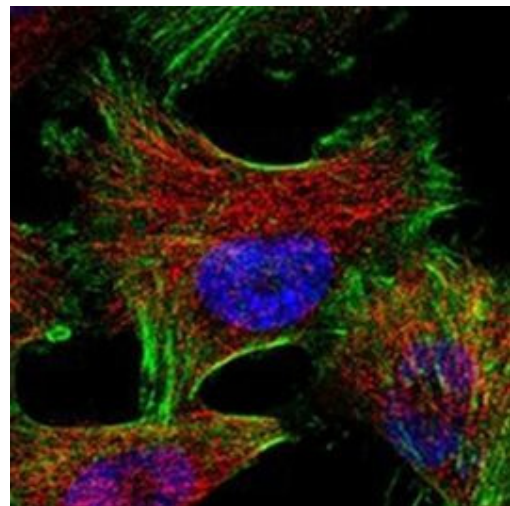
Product Specific Information

ABS 017-20-02 detects Gelsolin from human samples.

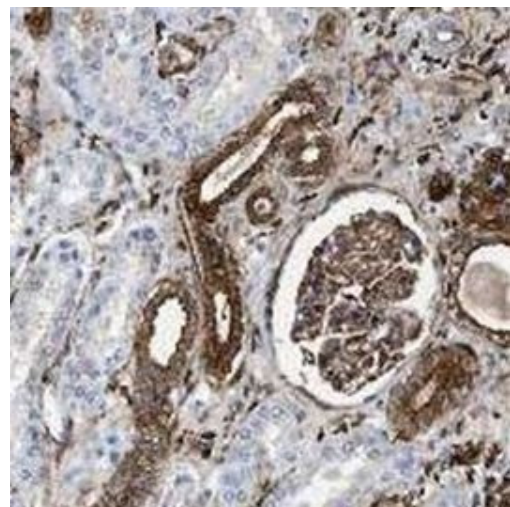
ABS 017-20-02 has been successfully used in ELISA and western blot procedures. ABS 017-20-02 does not work as capture antibody in sandwich ELISA.

NOTE: Concentration is lot-dependent and can vary from 0.85-1.15 mg/mL

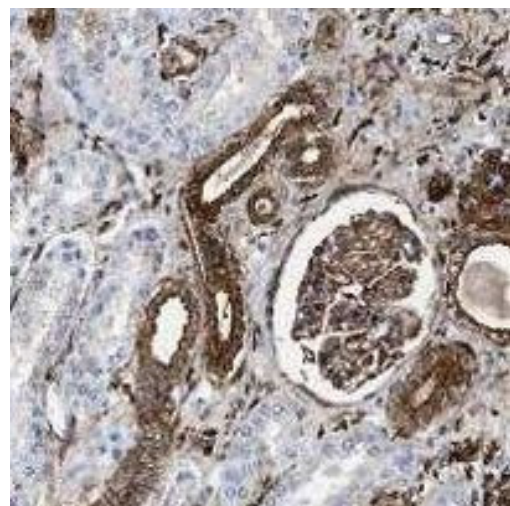
Product Images For Gelsolin Monoclonal Antibody (20)



Gelsolin Antibody (ABS 017-20-02) in ICC/IF
Immunofluorescent analysis of Gelsolin in U-251 MG cells using a Gelsolin monoclonal antibody (Product # ABS 017-20-02) at a dilution of 1:2000 showing positive staining in actin filaments.



Gelsolin Antibody (ABS 017-20-02) in IHC (P)
Immunohistochemical analysis of Gelsolin in human kidney using a Gelsolin monoclonal antibody (Product # ABS 017-20-02) at a dilution of 1:6000 showing staining in the cytoplasm and membrane of renal tubules and glomeruli.



Gelsolin Antibody (ABS 017-20-02) in IHC (P)
Immunohistochemical analysis of Gelsolin in formalin-fixed, paraffin-embedded human kidney tissue using a Gelsolin monoclonal antibody (Product # ABS 017-20-02).

For Research Use Only. Not for use in diagnostic procedures. Not for resale without express authorization. Products are warranted to operate or perform substantially in conformance with published Product specifications in effect at the time of sale, as set forth in the Production documentation, specifications and/or accompanying package inserts ("Documentation"). No claim of suitability for use in applications regulated by FDA is made. The warranty provided herein is valid only when used by properly trained individuals. Unless otherwise stated in the Documentation, this warranty is limited to one year from date of shipment when the Product is subjected to normal, proper and intended usage. This warranty does not extend to anyone other than the Buyer. Any model or sample furnished to Buyer is merely illustrative of the general type and quality of goods and does not represent that any Product will conform to such model or sample. NO OTHER WARRANTIES, EXPRESS OR IMPLIED, ARE GRANTED INCLUDING WITHOUT LIMITATION, IMPLIED WARRANTIES OF MERCHANTABILITY, FITNESS FOR ANY PARTICULAR PURPOSE, OR NON-INFRINGEMENT. BUYER'S EXCLUSIVE REMEDY FOR NON-CONFORMING PRODUCTS DURING THE WARRANTY PERIOD IS LIMITED TO REPAIR, REPLACEMENT OF OR REFUND FOR THE NON-CONFORMING PRODUCT(S) AT SELLER'S SOLE OPTION. THERE IS NO OBLIGATION TO REPAIR, REPLACE OR REFUND FOR PRODUCTS AS THE RESULT OF (i) ACCIDENT, DISASTER OR EVENT OF FORCE MAJEURE, (ii) MISUSE, FAULT OR NEGLIGENCE OF OR BY BUYER, (iii) USE OF THE PRODUCTS IN A MANNER FOR WHICH THEY WERE NOT DESIGNED, OR (iv) IMPROPER STORAGE AND HANDLING OF THE PRODUCTS. Unless otherwise expressly stated on the Product or in the documentation accompanying the Product, the Product is intended for research only and is not to be used for any other purpose, including without limitation, unauthorized commercial uses, in vitro diagnostic uses, ex vivo or in vivo therapeutic uses, or any type of consumption by or application to human or animals.